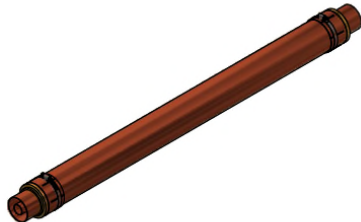


CF3032 High Band VHF Low Pass Harmonic Filter

High Rejection 13-Section Low Pass Filter

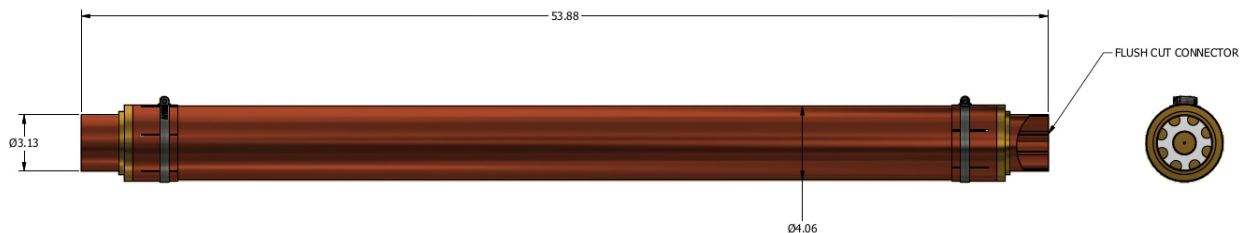
174 - 216 MHz



The coaxial, stepped impedance, low pass harmonic filters, rated to 20 kilowatts average power for ATSC 1.0, DVB, DAB, and DMB applications. These filters are tuned to a single frequency, at any High Band VHF Channel from 174 to 216 MHz, providing harmonic attenuation of 60 dB minimum from the 2nd through the 5th harmonic. The filter input and output are 3-1/8-inch unflanged flush cut connections and the filter body is 4-1/16-inch. Specify operating RF channel with order.

Specifications

Frequency Range:	170 to 216 MHz
VSWR:	<1.10:1 over band
Insertion Loss:	<-0.05 dB over band
Rejection	
2 nd through 5 th Harmonic:	>-60 dB
Input power:	
ATSC 1.0	25 kW maximum
ATSC 3.0	16 kW maximum
Length:	53.88-inches (1369 mm)
Input and Output:	3-1/8-inch, 50 ohm unflanged flush



Prices and specifications subject to change without notice.
January 18, 2019

Electronics Research, Inc. • 7777 Gardner Road • Chandler, IN 47610-9219 • USA
+1 812 925-6000 (tel) • +1 812 925-4030 (fax)

Your Single Source for Broadcast Solutions™ • Call Toll-free at 877 ERI-LINE • Visit Online at www.eriinc.com