

Horizontal Hanger, Indoor Expansion

For 3-1/8" Transmission Line

Type 3912

Notice

The installation, maintenance, or removal of antenna systems requires qualified, experienced personnel. ERI installation instructions are written for such personnel. Antenna systems should be inspected once a year by qualified personnel to verify proper installation, maintenance, and condition of equipment. ERI disclaims any liability or responsibility for the results of improper installation practices.

READ THESE INSTRUCTIONS THOROUGHLY BEFORE ASSEMBLY.

Description

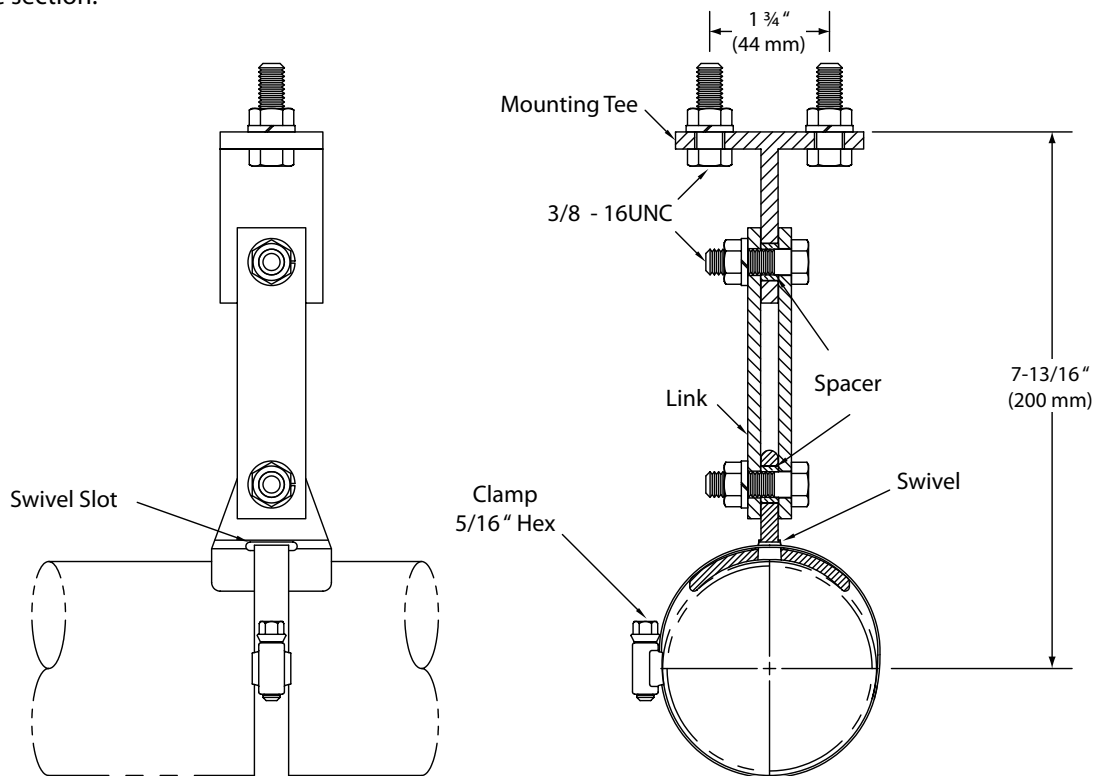
These hangers are used to provide indoor horizontal support while permitting line movement caused by thermal expansion and contraction. One hanger should be used to support every 10 ft (3 m) of line. Vertical center of 3-1/8" transmission line is 7-13/16" (200 mm) from mounting support.

Step 1. Indicate mounting tee hole positions on support post arms, ceiling plate, or other support where transmission line will be suspended. Hole positions should be 1-3/4" (44mm) apart on perpendicular to centerline of transmission line path. Place hangers approximately 5 ft (1.5 m) from each end of a standard 20 ft (6 m) line section.

Step 2. Drill two 7/16" (11 mm) diameter holes 1-3/4" (44 mm) apart where indicated on supports. Bolt hanger mounting tee to supports using 3/8" (9 mm) bolts, lockwashers, and nuts provided. Tighten bolts in mounting tee to 21 ±3 LB-FT torque. Make sure two link bolts are also tight. Note that spacers exist between the link bars to permit swivel action.

Step 3. Insert clamp end through swivel slot of hanger clamp.

Step 4. When hangers are in place, loosely assemble line section to hangers as shown in the drawing. With hangers serving as supports, transmission line can be aligned and connected to previous section. When transmission line flange connection is made, tighten hanger clamps with a 5/16" wrench or slotted screwdriver and proceed with next line section following the above procedure.



For Technical Support call 877 ERI-LINE or +1 812 925-6000, or visit our website at www.eriinc.com

All designs, specifications, and availabilities of products and services presented in this publication are subject to change without notice. Publication II23016 Revision A (2009-05-28) Copyright © 2009 Electronics Research, Inc. Chandler, IN 47610 USA